



User-manual email  
Thunderbird English version

Version : 1.1  
Date : 13 January 2011

---

**NessCis** P.O. Box 22095 3003 DB Rotterdam Netherlands  
E-mail [support@nesscis.nl](mailto:support@nesscis.nl) Phone +31-10 411 57 58 Fax +31-10 411 63 28  
KvK Rotterdam 24309371

## Overview email settings

The settings for different email software can be found on <http://www.nesscis.nl/support/>

Below you will find a summary for the email settings

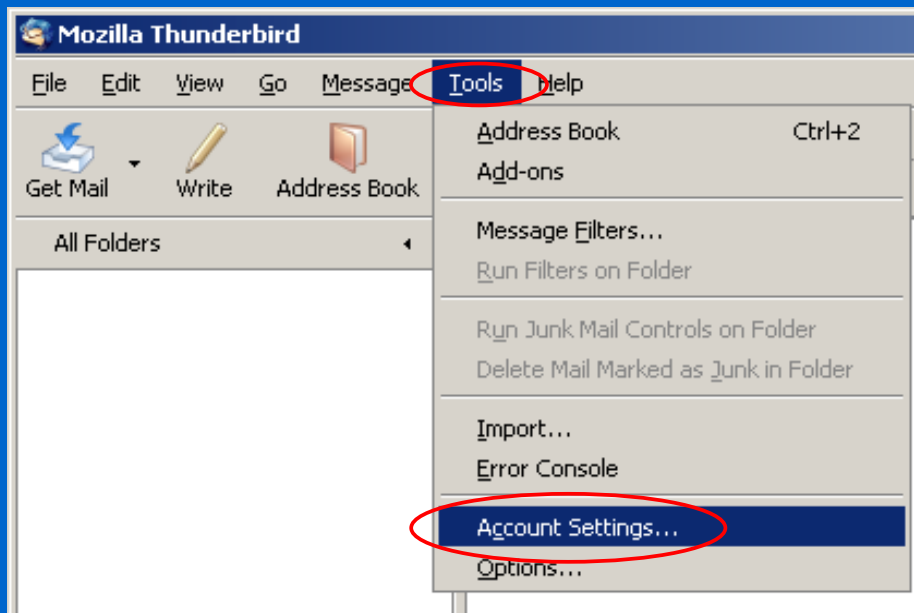
email address	:	.....@.....
username	:	.....
password	:	.....
webmail	:	<a href="https://secure.nesscis.net/webmail/">https://secure.nesscis.net/webmail/</a>
<b>POP3</b>		
incoming server	:	sslmail.nesscis.net
incoming port	:	995
security	:	SSL
<b>IMAP</b>		
incoming server	:	sslmail.nesscis.net
incoming port	:	993
security	:	SSL
<b>SMTP</b>		
outgoing server	:	sslmail.nesscis.net
outgoing port	:	465
requires authentication	:	enabled
security	:	SSL

Please don't hesitate to contact us if you have questions at +31-10-4115758.

## Settings for Mozilla Thunderbird

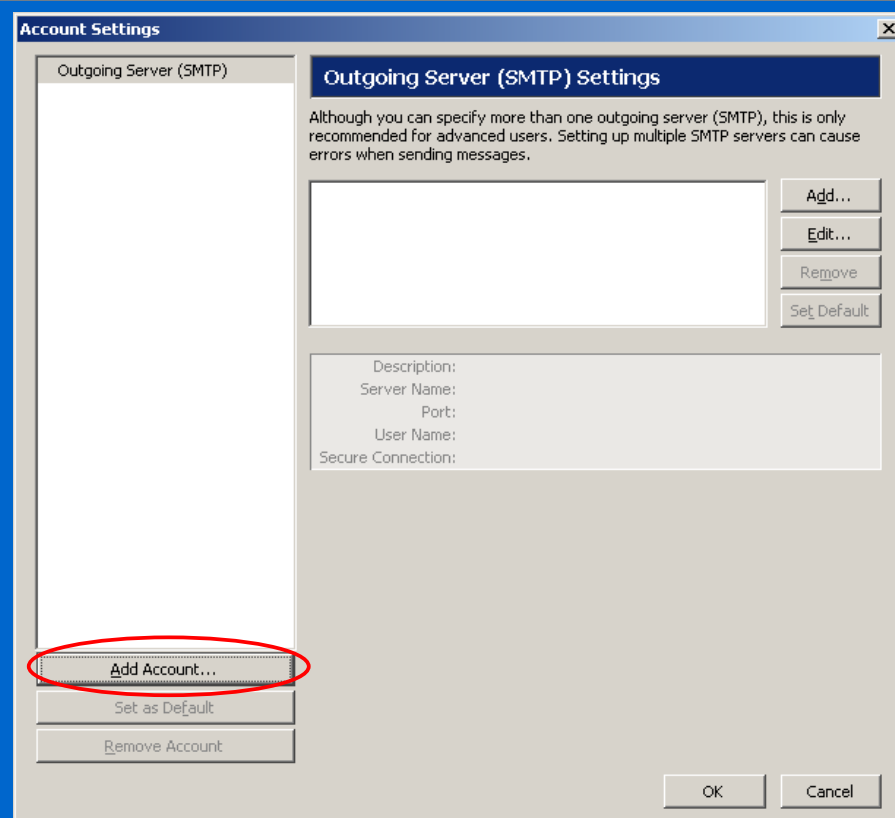
### Step 1

NessCis assumes that Thunderbird is installed correctly on your PC. Execute Thunderbird and select - [Tools](#) and click [Account Settings...](#) .



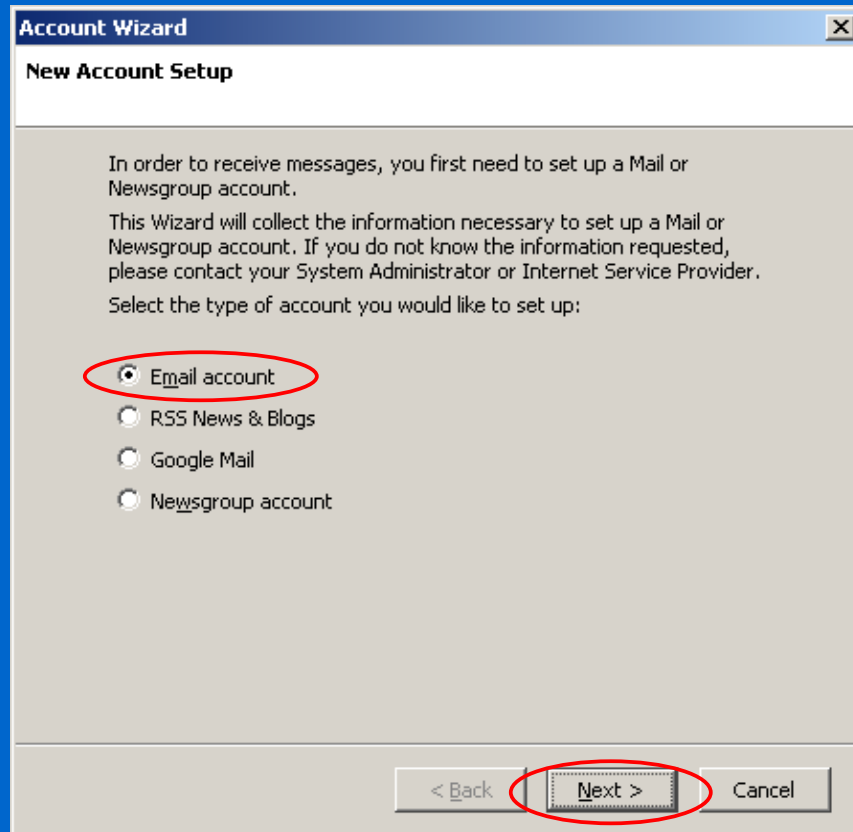
### Step 2

Click on - [Add account...](#) to create a new account.



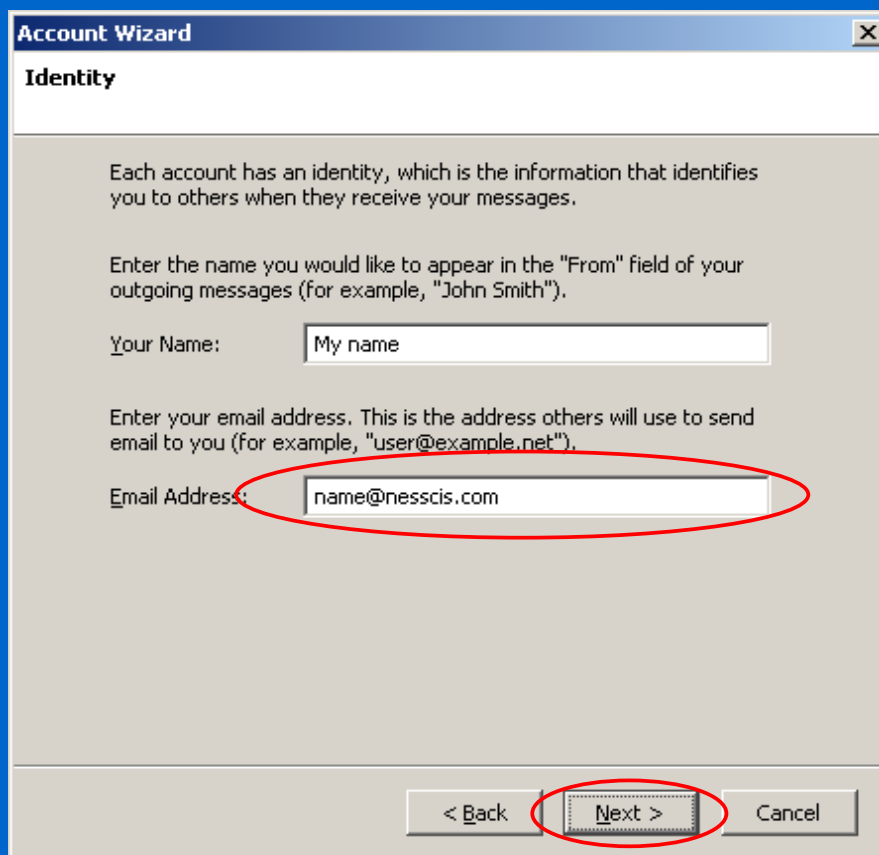
### Step 3

Select [Email account](#) and click [Next >](#).



### Step 4

Enter the email address supplied by NessCis in the [Emailaddress](#) field and click – [Next >](#).



### Step 5

Select [POP](#) as incoming server type.

Enter **sslmail.nesscis.net** in the - [Incoming Server](#): field.

Enter **sslmail.nesscis.net** in the - [Outgoing Server](#): field.

Click - [Next >](#).

Account Wizard

#### Server Information

Select the type of incoming server you are using.

POP  IMAP

Enter the name of your incoming server (for example, "mail.example.net").

Incoming Server: sslmail.nesscis.net

Untick this box to store mail for this account in its own directory. That will make this account appear as a top-level account. Otherwise, it will be part of the Local Folders Global Inbox account.

Use Global Inbox (store mail in Local Folders)

Enter the name of your outgoing server (SMTP) (for example, "smtp.example.net").

Outgoing Server: sslmail.nesscis.net

< Back Next > Cancel

### Step 6

Enter the **loginname** supplied by NessCis in the - [Incoming User Name](#): field.

Click - [Next >](#).

Account Wizard

#### User Names

Enter the incoming user name given to you by your email provider (for example, "jsmith").

Incoming User Name: loginname

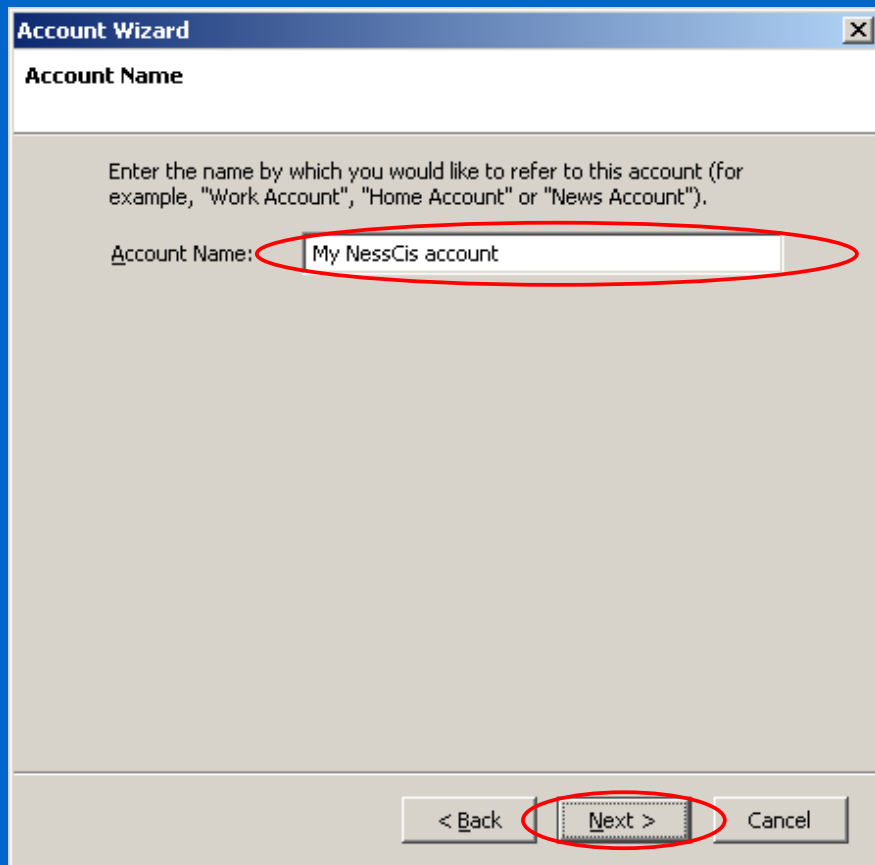
Your outgoing (SMTP) server, "sslmail.nesscis.net", is identical to your incoming server, your incoming user name will be used to access it. You can modify outgoing server settings by choosing Account Settings from the Tools menu.

< Back Next > Cancel

### Step 7

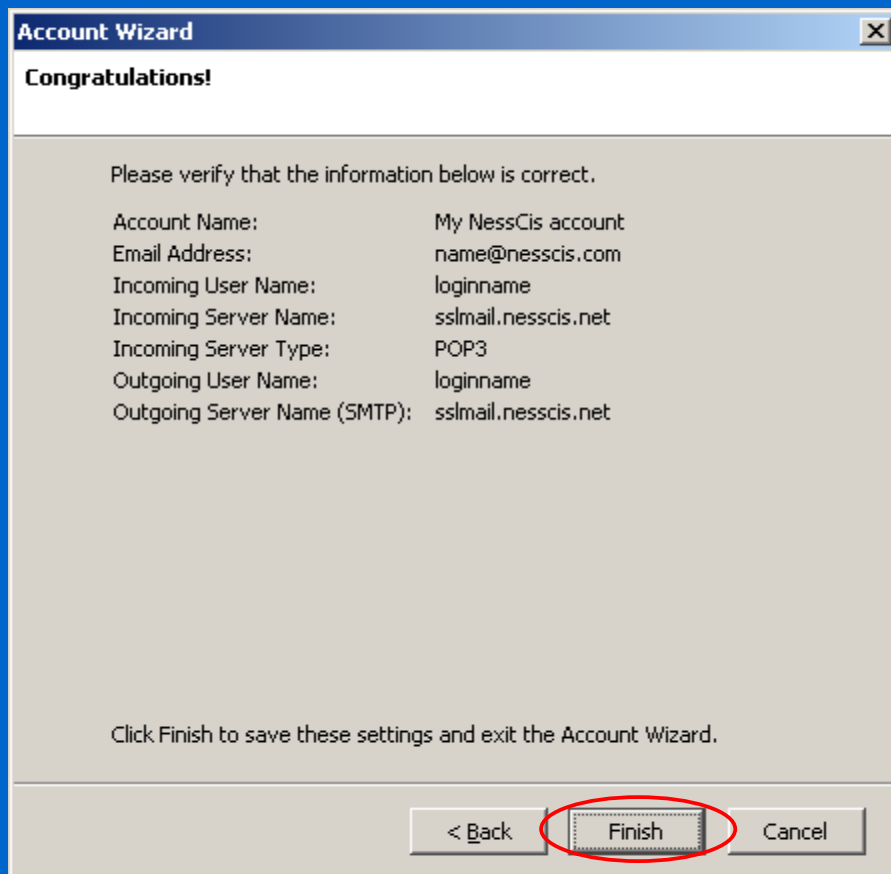
Enter in field – [Account Name](#): any description you want to use to recognize your NessCis account..

Click – [Next >](#).



### Step 8

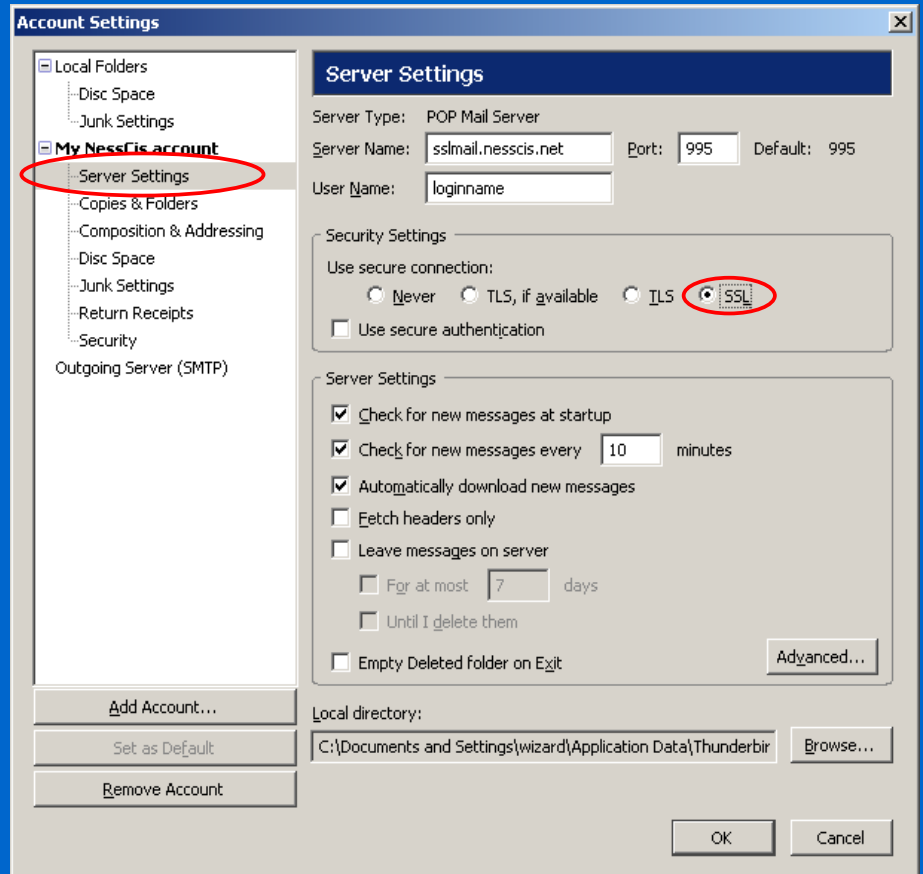
Click - [Finish](#).



### Step 9

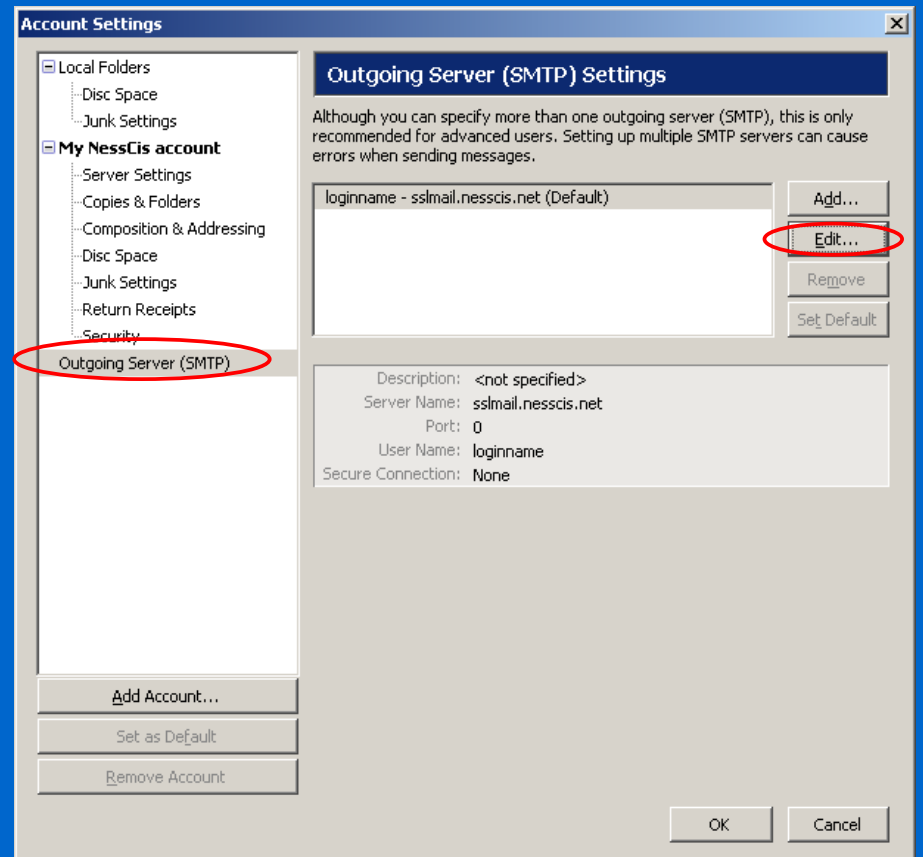
Click on [Server Settings](#).

Select [SSL](#) as connection security.



### Step 10

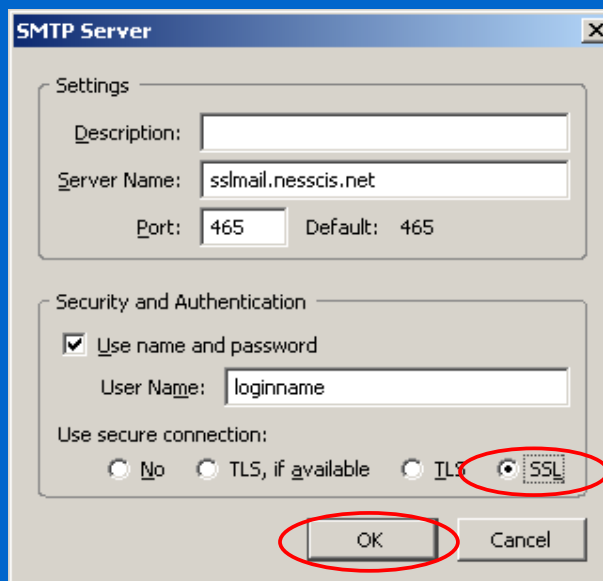
Select [Outgoing Server \(SMTP\)](#) and click - [Edit...](#)



### Step 11

Select [SSL](#) as connection security.

Click - [OK](#).

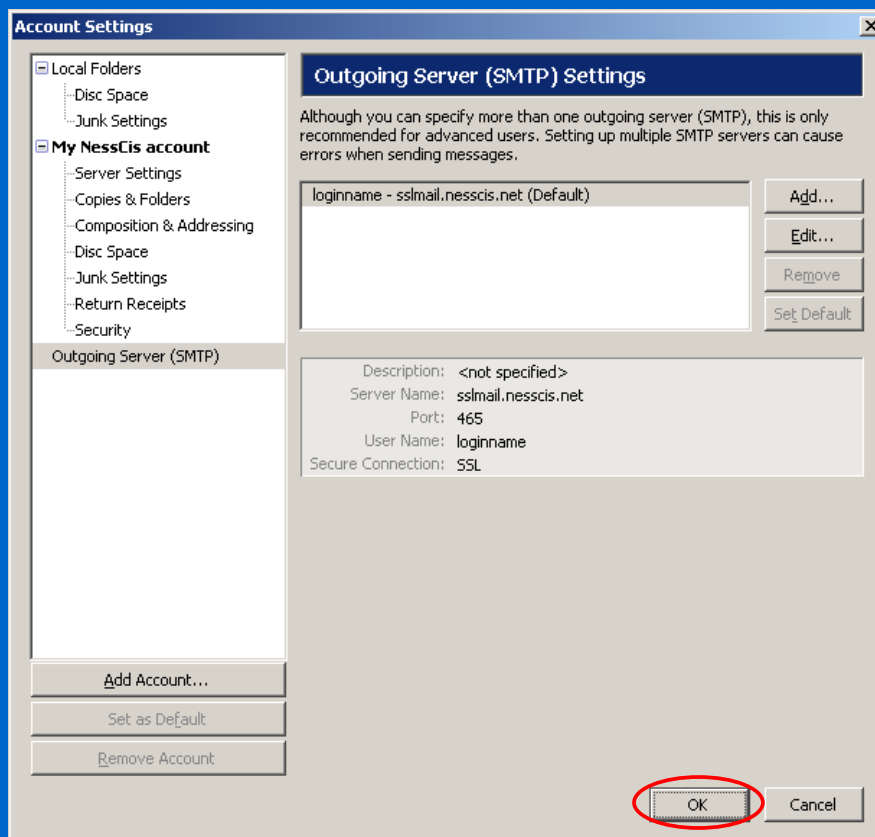


### Step 12

Click - [OK](#).

You have entered the most important settings to use your email account.

Please refer the [Help](#) function of your email software for more information or send an email to [support@nesscis.nl](mailto:support@nesscis.nl) for questions.





**Note**

The first time you log in using Thunderbird your password will be requested.

Enter the **password** supplied by NessCis in the field – [Enter your password for...](#) .

Select – [Use Password Manager...](#) if you want Thunderbird to remember your password.

Click - [OK](#).

